

# KANE COUNTY

## DIVISION of TRANSPORTATION

Carl Schoedel, P.E.  
Director of Transportation  
County Engineer



41W011 Burlington Road  
St. Charles, IL 60175  
Phone: (630) 584-1170  
Fax: (630) 584-5265

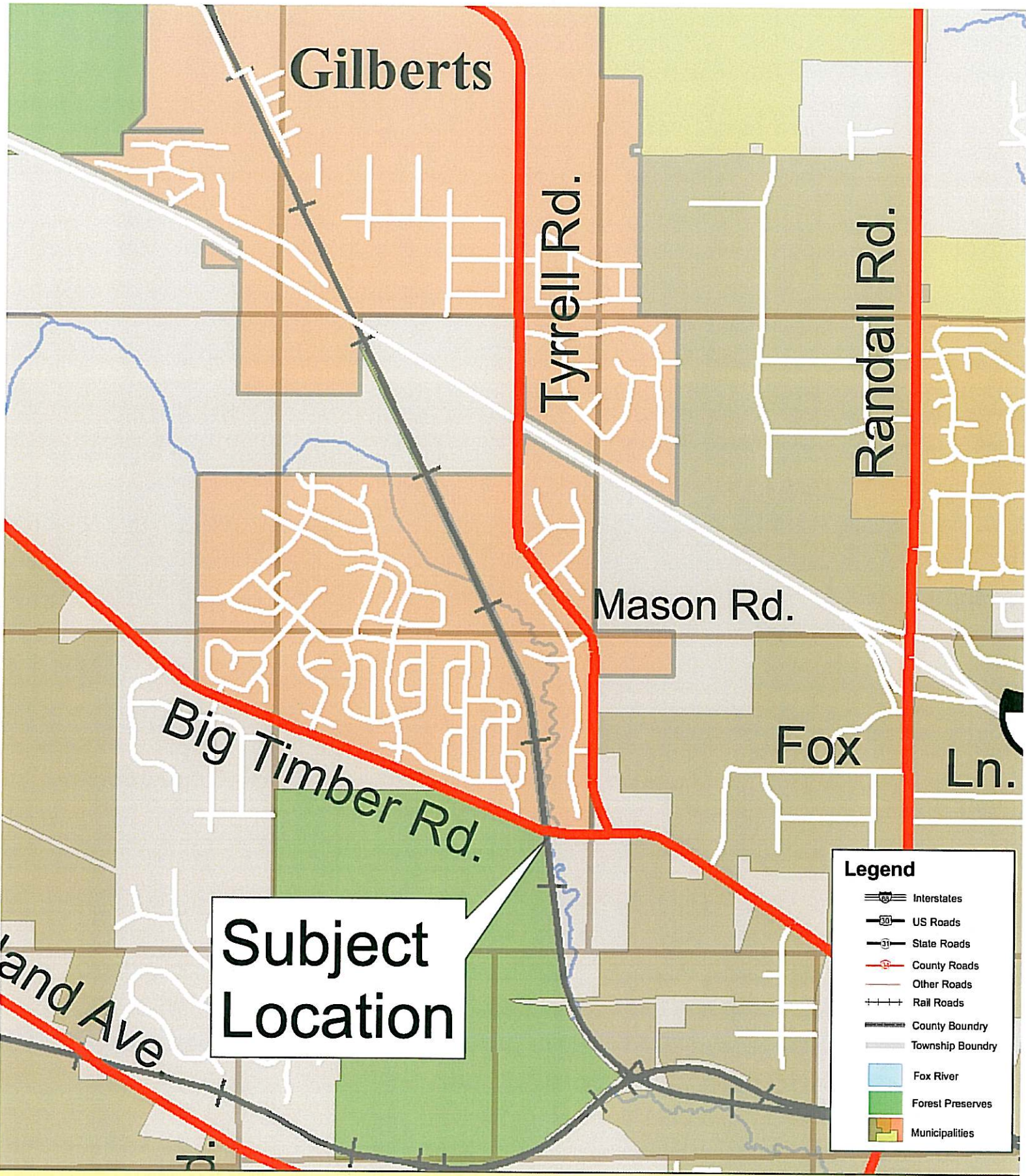
October 29, 2009

### PRESS RELEASE

The Kane County Division of Transportation is restoring the natural areas along Big Timber Road between Tyrrell Road and Meadows Drive with plant communities native to the region. Controlled burning is an important tool for restoring native plant communities in the Midwest. Fire inhibits the growth of low quality, invasive weeds while it stimulates the growth of quality native plants. Although the burned areas may appear unsightly for a short time following the burn, vegetation will return quickly in the spring. CBBEL is conducting this controlled burn to fulfill special conditions listed in the U.S. Army Corps of Engineers Permit for this site. Completion of the burn is anticipated to take 1 day and scheduling is dependent on site and weather conditions.

Motorists should be aware of smoke in the vicinity of the roadway. The controlled burn is scheduled to take place between Tuesday, November 3<sup>rd</sup> and Tuesday, November 10<sup>th</sup>.

Concerns about the project should be addressed to Mike Zakosek at 630-584-1170.

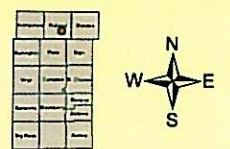
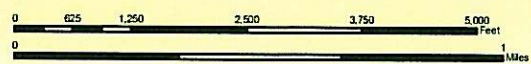


**Subject Location**

**Legend**

- Interstates
- US Roads
- State Roads
- County Roads
- Other Roads
- Rail Roads
- County Boundary
- Township Boundary
- Fox River
- Forest Preserves
- Municipalities

Proposed plant restoration area / controlled burn.



**"NEIGHBOR NOTIFICATION"**  
**NOTICE OF INTENT TO CONDUCT A CONTROLLED BURN**

Please be aware that Christopher B. Burke Engineering, Ltd., (CBBEL) intends to conduct a controlled burn as part of required wetland management at:

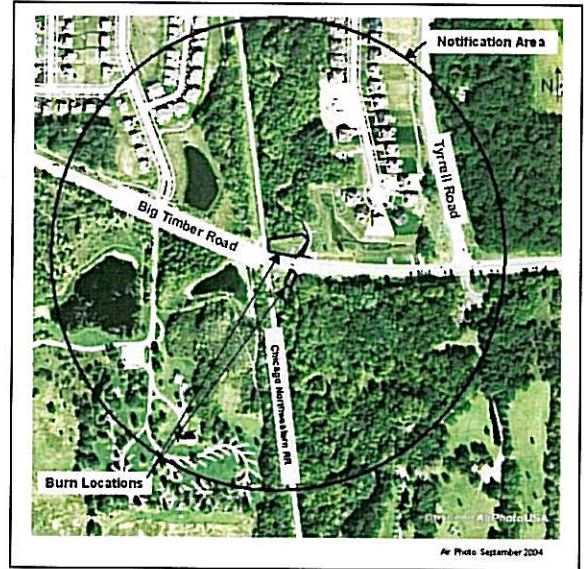
**Big Timber Road Bridge**

**Where:** North and South of Big Timber Road Bridge, West of Tyrell Road and East of the Chicago Northwestern Railroad  
Elgin, Kane County, Illinois

**Who:** Christopher B. Burke Engineering, Ltd.  
9575 West Higgins Road  
Rosemont, IL 60018  
TEL (847) 823-0500  
FAX (847) 823-0520

**What:** Controlled burn of natural vegetation

**When:** Fall: November - December 2009  
OR March-April 2010.  
(Completion of the burn is anticipated to take 1 day and scheduling is dependent on site and weather conditions)



**Why:** Kane County Department of Transportation is restoring the natural areas of this site with plant communities native to the region. Controlled burning is an important tool for restoring native plant communities in the Midwest. Fire inhibits the growth of low quality, invasive weeds while it stimulates the growth of quality native plants. Although the burned areas may appear unsightly for a short time following the burn, vegetation will return quickly in the spring. CBBEL is conducting this controlled burn to fulfill special conditions listed in the U.S. Army Corps of Engineers Permit for this site.

**If you have any health problems that may be exacerbated by smoke that may potentially be generated during a controlled burn; and/or you would like us to notify you the day before the burn, please fill out and detach the form below and mail (or fax the whole form) within one week of receipt.**

CUT HERE TO MAIL IN or FAX ENTIRE FORM

Neighbor of: Big Timber Road Bridge (03-904) (Please Print Clearly) (2009)

Name: \_\_\_\_\_ (REQUIRED)

Address: \_\_\_\_\_ (REQUIRED)

Phone: \_\_\_\_\_ (REQUIRED)

\_\_\_\_ Please notify me the day before the burn.

\_\_\_\_ I have a specific medical condition that may be exacerbated by a burn. Please call me.

Mail or Fax to: Christopher B. Burke Engineering, Ltd., 9575 W. Higgins Rd., Suite 600  
Rosemont, Illinois 60018 Attn: Robert Sliwinski FAX -847-823-0520